

По вопросам продаж и поддержки обращайтесь:

Алматы (7273)495-231
Ангарск (3955)60-70-56
Архангельск (8182)63-90-72
Астрахань (8512)99-46-04
Барнаул (3852)73-04-60
Белгород (4722)40-23-64
Благовещенск (4162)22-76-07
Брянск (4832)59-03-52
Владивосток (423)249-28-31
Владикавказ (8672)28-90-48
Владимир (4922)49-43-18
Волгоград (844)278-03-48
Вологда (8172)26-41-59
Воронеж (473)204-51-73
Екатеринбург (343)384-55-89
Иваново (4932)77-34-06
Ижевск (3412)26-03-58
Иркутск (395)279-98-46
Казань (843)206-01-48
Россия +7(495)268-04-70

Калининград (4012)72-03-81
Калуга (4842)92-23-67
Кемерово (3842)65-04-62
Киров (8332)68-02-04
Коломна (4966)23-41-49
Кострома (4942)77-07-48
Краснодар (861)203-40-90
Красноярск (391)204-63-61
Курск (4712)77-13-04
Курган (3522)50-90-47
Липецк (4742)52-20-81
Магнитогорск (3519)55-03-13
Москва (495)268-04-70
Мурманск (8152)59-64-93
Набережные Челны (8552)20-53-41
Нижний Новгород (831)429-08-12
Новокузнецк (3843)20-46-81
Ноябрьск (3496)41-32-12
Новосибирск (383)227-86-73
Киргизия +996(312)-96-26-47

Омск (3812)21-46-40
Орел (4862)44-53-42
Оренбург (3532)37-68-04
Пенза (8412)22-31-16
Петрозаводск (8142)55-98-37
Псков (8112)59-10-37
Пермь (342)205-81-47
Ростов-на-Дону (863)308-18-15
Рязань (4912)46-61-64
Самара (846)206-03-16
Саранск (8342)22-96-24
Санкт-Петербург (812)309-46-40
Саратов (845)249-38-78
Севастополь (8692)22-31-93
Симферополь (3652)67-13-56
Смоленск (4812)29-41-54
Сочи (862)225-72-31
Ставрополь (8652)20-65-13
Сургут (3462)77-98-35
Казахстан +7(7172)727-132

Сыктывкар (8212)25-95-17
Тамбов (4752)50-40-97
Тверь (4822)63-31-35
Тольятти (8482)63-91-07
Томск (3822)98-41-53
Тула (4872)33-79-87
Тюмень (3452)66-21-18
Ульяновск (8422)24-23-59
Улан-Удэ (3012)59-97-51
Уфа (347)229-48-12
Хабаровск (4212)92-98-04
Чебоксары (8352)28-53-07
Челябинск (351)202-03-61
Череповец (8202)49-02-64
Чита (3022)38-34-83
Якутск (4112)23-90-97
Ярославль (4852)69-52-93



Other Accessories

- Laser Safety Goggles for various wavelengths.



Reference Standards

- **RS50** – is a 50 mm diameter white reflectance standard made of Halon. It is used to take reference measurements using the R400 Reflectance Probe. The white standard will reflect >97% of the light from 300 nm – 1700 nm
- **RS-HR** – High-reflectivity Specular Reflectance Standard is a mirrored, fused-silica standard that can be used as a reference when measuring surfaces with high specular reflectance such as optical substrates, coatings, and metals
- **TF-STD1** – Thin Film standards for thickness measurement verification. Includes Si substrate for reference with 2 additional substrates with 100 nm and 1,000 nm thickness of SiO₂. Additional thickness standards (10 nm and 10,000 nm) can be added



Portability Options

Battery Packs

- **BP1** is a Lithium-Ion Battery Pack with 5400mA/h, 2 x 5V out. Ultimate Portability using the light weight BP1/BP2 battery pack for field work. Long Life rechargeable battery pack BP1 provides over 5 hours of continuous spectral acquisition for RED-Wave NIR-InGaAs spectrometer with TEC or 20 hours with TEC off or when using other spectrometer models.
- **BP2** is a Lithium-Ion Battery Pack with 7400m A/h, 2 V x 5 V & 2 V x 12 V out. BP2 adds on 2 additional 12 V power outputs to operate 2 spectrometers and 2 light sources. The BP2 can power the SL1 and the SL5 lamps.

Instrument Case

- The instrument case is water-tight, crush-proof, and dust-proof. It has easy to open double throw latches and padlock protectors. Pack your spectroscopy equipment for field measurements.
-



Lenses and Couplers

- **LENS-COL** is a collimating lens for the VIS-NIR ranges.
 - **LENS-QCOL** is a collimating lens for the UV-VIS-NIR ranges.
 - **SMA-Coupler** allows accessories, such as collimating lenses or cosine receptors, to attach directly to a spectrometer without the need for fiber optic cables.
 - **Splice Bushing** is used to adjoin two fiber optic cables together.
 - **SMA-FC** is an adapter used to adjoin optical components with different connection types, SMA-905 and FC.
 - **SMA-C-Mount to SMA-905 adapter** allows connection of the spectrometer to other optical devices such as microscopes and telescopes.
 - **VFT** is fiber optic Vacuum Feed Through, 600 micron UV/VIS, mounted on a 275" CF Flange with male SMA-905 connectors on each end. Other options available
-



Fibre Optic Cables

- Single strand, multimode fibre optic cables are available with SMA905 connectors, $\frac{1}{4}$ inch diameter. steel mono-coil armor with black PVC jacket. Sizes include 400 μm , 600 μm , or 1000 μm core diameters
- Standard lengths are 1 and 2 meters
- Custom lengths are available with a minimum price of a 1 meter fibre (extra delivery time also)

Product Description

We offer a variety of fibre optic cables for use with compact and modular spectroscopy instrumentation. Fibre optic cables provide an easy way to transmit light without need for system alignment or attenuation of signal. Light can be easily transferred from a light source to a cuvette holder containing a sample then back to a spectrometer for detection.



Metrology Accessories

Transmission Fixtures

- **TXF-1** Transmission Fixture includes 2 UV grade collimating lenses, aligned and fixed 1cm pathlength.
- **TXF-4** includes two collimating lenses which allows the sample to be oriented vertically, the standard fixture allows a variable pathlength from 0 to 7cm. Custom posts available
- **TXF-IC2** Vertical transmission fixture with variable path length, includes 1 collimating lens and 1 miniature 2" integrating sphere with 5/8" port.

Reflectance Fixtures

- **RFX-1** reflectance fixture with integrated 10 watt halogen bulb for VIS-NIR.
 - **RFX-2** reflectance fixture with integrated 10,000 hour 5 watt halogen bulb for VIS-NIR.
 - **RFX-3D** reflectance from 3 positions is combined using special 3-to-1 fibre for spectrometer.
-



Probes and Accessories

Dip Probes

- **DP400-VISNIR** is dip probe with 400um fiber, 10mm path length tip, integrated mode scrambler to improve measurement repeatability.
- **DP400-UVVIS-SR** is a dip probe for UV applications with 400um fiber, 10mm path length tip, integrated mode scrambler to improve measurement repeatability.
- **DP-TIP** are replaceable dip probe tips for DP400 dip probe. Specify 2, 5, 10, or 20mm path.

Reflectance Probes

- **R600-8-VisNIR** is a Reflectance Probe for VIS-NIR with 7 optical fibers bundled around 1 600µm fibre.
- **R600-8-UVVIS-SR** is a Reflectance Probe for UV and Visible wavelengths; 7 around 1 with 600µm fibres.
- **RPH1 / 2** is a Reflectance Probe Holder block that maintains a 45 and/or 90 degree angle and user set distance from sample (0-3/4").
- **RPH3** is a Reflectance Probe Holder stand for 90° angle measurements.
- **RTIP45** is a black plastic tip has 45 degree angle and slides onto reflectance probe and locks to set position.
- **RS50** is a 50 mm diameter white reflectance standard made of Halon.

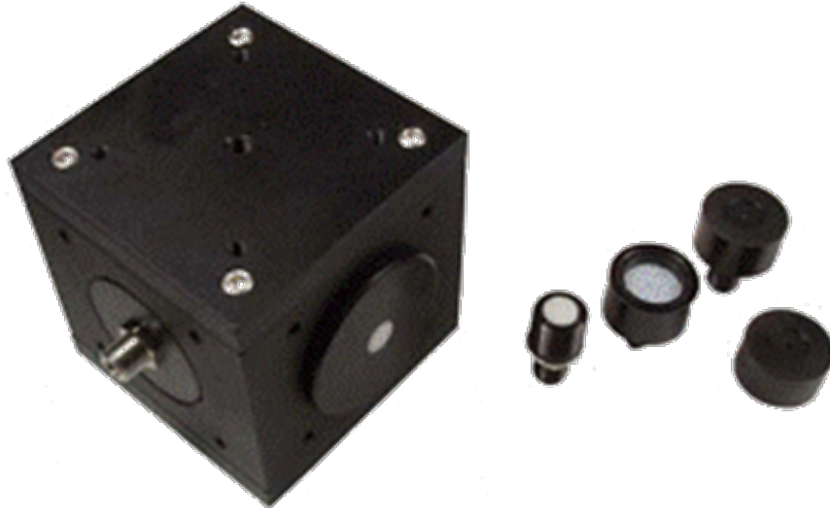
Fluorescence Probes and Accessories

- **R600-8-UVVIS-SR** is a dual purpose fluorescence/reflectance probe with 7 optical fibres bundled around 1 600 µm fibre.
 - **RPH3** can also be used as a Fluorescence Probe Holder stand for direct excitation of solid and powdered fluorescence agents.
-



Cuvette Holders and Flow Cells

- CUV1 is a 4-way fibre optic cuvette holder used for transmission, absorbance, fluorescence, and colour measurements in liquids.
 - CUV-F is a fibre optic cuvette holder for SL1-LED excitation with 2 collimating lens for measuring fluorescence.
 - MFC is a mini flow cell with 10mm optical path length with fused silica windows.
 - MFFC is a mini fluorescence flow cell that has a fibre optic cable input to send excitation energy through a fused silica window into a 2 mm inner-diameter sample compartment.
 - CUV-TEMP is a temperature controlled cuvette holder for fluorescence and absorbance measurements from -30 °C to +105 °C.
 - QCV-5 Package of 5 Quartz cuvettes with 1 cm path length
-



Radiometry Accessories

Cosine Receptors couple to fibre optic cables and collect light with an 180° field of view using demountable diffusers.

A perfect cosine response provides accurate absolute intensity when multiple lights are measured at same time.

Cosine receptors provide relative and absolute spectral intensity measurements, for emissive color applications, and for evaluation of light sources such as the Sun, Lamps, LEDs and Lasers.

По вопросам продаж и поддержки обращайтесь:

Алматы (7273)495-231
Ангарск (3955)60-70-56
Архангельск (8182)63-90-72
Астрахань (8512)99-46-04
Барнаул (3852)73-04-60
Белгород (4722)40-23-64
Благовещенск (4162)22-76-07
Брянск (4832)59-03-52
Владивосток (423)249-28-31
Владикавказ (8672)28-90-48
Владимир (4922)49-43-18
Волгоград (844)278-03-48
Вологда (8172)26-41-59
Воронеж (473)204-51-73
Екатеринбург (343)384-55-89
Иваново (4932)77-34-06
Ижевск (3412)26-03-58
Иркутск (395)279-98-46
Казань (843)206-01-48
Россия +7(495)268-04-70

Калининград (4012)72-03-81
Калуга (4842)92-23-67
Кемерово (3842)65-04-62
Киров (8332)68-02-04
Коломна (4966)23-41-49
Кострома (4942)77-07-48
Краснодар (861)203-40-90
Красноярск (391)204-63-61
Курск (4712)77-13-04
Курган (3522)50-90-47
Липецк (4742)52-20-81
Магнитогорск (3519)55-03-13
Москва (495)268-04-70
Мурманск (8152)59-64-93
Набережные Челны (8552)20-53-41
Нижний Новгород (831)429-08-12
Новокузнецк (3843)20-46-81
Ноябрьск (3496)41-32-12
Новосибирск (383)227-86-73
Киргизия +996(312)-96-26-47

Омск (3812)21-46-40
Орел (4862)44-53-42
Оренбург (3532)37-68-04
Пенза (8412)22-31-16
Петрозаводск (8142)55-98-37
Псков (8112)59-10-37
Пермь (342)205-81-47
Ростов-на-Дону (863)308-18-15
Рязань (4912)46-61-64
Самара (846)206-03-16
Саранск (8342)22-96-24
Санкт-Петербург (812)309-46-40
Саратов (845)249-38-78
Севастополь (8692)22-31-93
Симферополь (3652)67-13-56
Смоленск (4812)29-41-54
Сочи (862)225-72-31
Ставрополь (8652)20-65-13
Сургут (3462)77-98-35
Казахстан +7(7172)727-132

Сыктывкар (8212)25-95-17
Тамбов (4752)50-40-97
Тверь (4822)63-31-35
Тольятти (8482)63-91-07
Томск (3822)98-41-53
Тула (4872)33-79-87
Тюмень (3452)66-21-18
Ульяновск (8422)24-23-59
Улан-Удэ (3012)59-97-51
Уфа (347)229-48-12
Хабаровск (4212)92-98-04
Чебоксары (8352)28-53-07
Челябинск (351)202-03-61
Череповец (8202)49-02-64
Чита (3022)38-34-83
Якутск (4112)23-90-97
Ярославль (4852)69-52-93